

SPOTLIGHT ON

Stomach Cancer Symposium

Saturday, October 26th 2019

8:00 AM – 2:20 PM

The Spotlight on Stomach Cancer™ is an opportunity for those in the stomach cancer community, the medical community, and the general public to come together to learn more about stomach cancer and connect with others impacted by this disease.



AGENDA

8:00 – 8:30

Continental Breakfast

Health Sciences Innovation Bldg (HSIB)

8:30 – 8:45

Welcome and Opening Remarks

Dylan Davison – Board Chair

Session 1 - Infectious Causes in Vulnerable Populations - HSIB

Moderator: Robin Harris, MPH, PhD

8:45 – 9:05

H. pylori and Gastric Cancer in South Texas Hispanic Populations

Dorothy Long Parma, MD, MPH

Institute for Health Promotion Research (IHPR),
Department of Population Health Sciences at UTHealth
San Antonio (UTHSA) School of Medicine.

9:10 – 9:30

H. pylori and Gastric Cancer in Native Americans

Gregory Jarrin, MD, FACS

Winslow Indian Health Care Center Inc.

9:30 – 9:50

Patient Perspectives

Katherine Smith

Guest Speaker

Navajo Tribe, Flagstaff, AZ

9:50 – 10:05

Questions & Answers

Panel Discussion

10:05 – 10:25

Refreshment Break

Session 2 - Impact of the Genome on Risk, Diagnosis and Family - HSIB

Moderator: Juanita L. Merchant, MD, PhD

10:25 – 11:05

Keynote Speaker Address

Genomics of Gastric Cancer:

From Targeted Therapy to Familial Syndromes

Adam Bass, MD

Associate Professor of Medicine

Dana - Farber Cancer Institute, Harvard Medical School

11:05 – 11:25

Genetic Counseling of Gastric Cancer

Lauren Maynard, MS, CGC

Certified Genetic Counselor

University of Arizona – Tucson

11:25 – 11:35

Questions & Answers

Panel Discussion

11:35 – 12:10

Lunch

Location: HSIB Atrium

Session 3 - Multi-Disciplinary Treatment Approaches - HSIB

Moderator: Rachna Shroff, MD, MS

12:15 – 12:35

Systemic Therapy for Advanced Gastric Cancer

Aaron Scott, MD

GI Medical Oncology

Associate Professor of Medicine

University of Arizona Cancer Center

12:35 – 12:55

Non-Surgical Treatment in Early Gastric Cancer

Hemanth Gavini, MD, MPH

Medical Director of Endoscopy

Assistant Professor, Gastroenterology & Hepatology,

University of Arizona

12:55 – 1:15

Questions & Answers

Panel Discussion

1:15 – 1:25

Refreshment Break

Session 4 - Healthy Living without a Stomach

Moderator: Aaron Scott, MD

1:25 – 1:40

Patient Perspectives

Lionel Corral

Guest Speaker

Tucson, AZ

Atanasio Gastzionis and Thanos Gatzionis

Guest Speakers

Nogales, AZ

1:40 – 1:55

Living with Stomach Cancer: Nutrition & Health Follow-up

Michelle Bratton, RD

Nutritionist

University of Arizona Cancer Center – Tucson

1:55 – 2:10

Questions & Answers

Panel Discussion

2:10 – 2:20

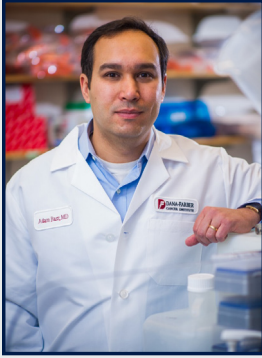
Closing Remarks & Adjourn

Dylan Davison – Board Chair

5:30-8:30

Reception

HSIB Atrium



Adam Bass, MD

As a medical oncologist and cancer researcher, my goal is to characterize the genomic alterations underlying esophageal and gastric cancers, to utilize the laboratory to mechanistically define how these genomic alterations induce cancer and then to develop approaches for translating genomic discoveries into effective therapeutic strategies. Since starting my laboratory in 2010, a first focus has been to characterize genomic alterations underlying these tumors. My lab has published many of the pivotal papers in this field. Most notable among these was the study I led through The Cancer Genome Atlas network, which introduced new molecular classification for stomach and esophageal cancer. In parallel, my lab has built a program in the mechanistic and translational study in gastroesophageal cancer. Success in this area has exemplified our studies into the oncogenes such as SOX2, KRAS and ERBB2. Additionally, we recently developed new systems for establishing mouse models of gastroesophageal cancers and have established a large and robust program in patient-derived models of these cancers. We are increasingly using these models now to build upon our genomic studies and to define new therapeutic approaches for these cancers.

Beyond these studies in my own laboratory, I also lead the SPORE (Special Program of Research Excellence) in gastrointestinal cancers across the Dana-Farber/Harvard Cancer Center (DF/HCC) and also Lead the Gastrointestinal Malignancies Program at DF/HCC.



Michelle Bratton, RD

Michelle Bratton joined the staff of the University of Arizona Cancer Center in 2007. She has worked in clinical dietetics and therapeutic nutrition for 35 years and in addition to being a Registered Dietitian, she is a Certified Specialist in Oncology Nutrition.

In her position at the Cancer Center, she counsels patients on ways to maintain good nutrition during treatment and adopting a healthy diet for cancer survivorship. She has written for peer-reviewed journals and published several book chapters on the subject of nutrition and cancer.



Hemanth Gavini, MD, MPH

Dr. Hemanth Gavini is an Assistant Professor of Medicine, Medical Director of Endoscopy – Tucson Main Campus, and assistant professor of surgery as adjunct faculty. He has clinical and research interests in pancreaticobiliary endoscopy (ERCP/Cholangioscopy), endoscopic ultrasonography (EUS), cancer staging, endoscopic palliation of gastrointestinal malignancies with luminal stenting, endoscopic mucosal resection (EMR), endoscopic submucosal dissection (ESD), peroral endoscopic myotomy (POEM) and management of pancreato-biliary disorders and Barrett's esophagus. His clinical and research interests in gastrointestinal malignancy combined with his extensive training in advanced endoscopic procedures places him in a unique position where he combines all elements of practice to provide the very best patient care.



Robin B. Harris, MPH, PhD

Robin B. Harris, MPH, PhD is a Professor in the Department of Epidemiology and Biostatistics at the Mel and Enid Zuckerman College of Public Health. Her PhD in epidemiology is from the University of Washington and Master's in Public Health from the University of Texas at Houston. She is a member of the University of Arizona Cancer Center. Dr. Harris has extensive experience working with community-based epidemiological studies. Her research interests broadly focus on causes and prevention of cancer, with a primary emphasis in skin cancer prevention and environmental health disparities. Currently, Dr. Harris is the principal investigator of a research project for the Center for Indigenous Environmental Health Research (Cumulative Environmental Effects: Hopi Environmental Health Project) and a pilot project investigating *Helicobacter pylori* infection and stomach cancer with the Navajo. Dr. Harris is also co-principal investigator for the T32 Cancer Health Disparities Postdoctoral Training in Cancer Prevention and Control.



Gregory Jarrin, MD, FACS

Gregory Jarrin, MD, FACS is a practicing Surgeon in Winslow, AZ. Dr. Jarrin graduated from New York Medical College in 1989 and has been in practice for 28 years. He currently practices at Winslow Indian Health Care Center Inc and is affiliated with Little Colorado Medical Center. In 2014, Dr. Jarrin was nominated by the students he has mentored and credits mentorship for his commitment to a career in surgery. During this year he was also appointed Chief Clinical Consultant for Surgery at the Indian Health Service. Dr. Jarrin's research is focused on Gastric Cancer among the Native American Indian population.



Dorothy Long Parma, MD, MPH

Dorothy Long Parma, MD, MPH is a Research Assistant Professor at the Institute for Health Promotion Research (IHPR) and the Department of Population Health Sciences at UTHealth San Antonio (UTHSA) School of Medicine. She obtained her MD at the University of Texas Health Science Center-Houston School of Medicine in 2007, and her MPH in Health Promotion/Behavioral Science at the University of Texas Health Science Center-Houston School of Public Health San Antonio Regional Campus in 2012. She has been on faculty at UTHSA since 2011 and has over 7 years' experience designing and coordinating development and implementation of projects ranging from small pilots to multi-year NIH- and foundation-funded studies in obese children, and adult survivors of breast and liver cancer. Her clinical background has often made her a resource for multidisciplinary projects with both basic science, clinical and social/behavioral components. She recently received a three-year career development award from the Department of Defense to study gaps in gastric cancer risk factor management using electronic health data and qualitative interviews of patients and providers.



Lauren Maynard, MD, CGC

Lauren Maynard earned her B.S. in Molecular and Cellular Biology from University of Arizona and her Master of Science in Medical Genetics from University of Cincinnati/ Cincinnati Children's Hospital Medical Center. She is a board Certified Genetic Counselor and Diplomat of the American Board of Genetic Counseling. She began her career at University of Arizona as a Genetic Counselor for adult genetics, pediatric genetics, neuromuscular and hypertrophic cardiomyopathy clinics. In 2017, she began her role as Genetic Counselor for Banner Health at the University of Arizona Cancer Center where she provides genetic counseling for individuals with a personal and/or family history of cancer or tumors in the High Risk Clinic.



Juanita L. Merchant, MD, PhD

Dr. Juanita Merchant, joined the faculty at the University of Arizona College of Medicine – Tucson in July 2018 as a professor of medicine in the UA Department of Medicine and chief of the UA Division of Gastroenterology and Hepatology. Dr. Merchant earned her MD and PhD at Yale University School of Medicine (MSTP), has written or co-written more than 120 peer-reviewed research publications, and is editor or co-editor of four books and several book chapters. In 2016, she was appointed to the Board of Scientific Counselors for the National Institute of Diabetes and Digestive and Kidney Diseases. Additionally, she was recently elected to the National Academy of Medicine Council. Dr. Merchant is a co-PI on the NIH-AGA FORWARD program which was developed to increase the number of academic gastroenterologists from under-represented groups. Dr. Merchant served as MSTP Associate Director at the University of Michigan and is also a member of the national advisory committee for the Harold Amos Medical Faculty Development Program. She has remained continuously funded by NIH for her work on gastrin and neuroendocrine tumors; hedgehog signaling and gastric cancer; and transcriptional control mechanisms in colon cancer.



Aaron Scott, MD

A graduate of the University of Arizona College of Medicine– Tucson, Dr. Scott completed his residency in internal medicine and fellowship in hematology/oncology at the University of Colorado - Denver before joining the faculty in the UA Division of Hematology and Oncology and the UA Cancer Center in 2016. He specializes in cancers of the GI tract, which include colon cancer, rectal cancer, anal cancer, esophageal cancer, stomach cancer, liver cancer, and pancreatic cancer. His particular interests are in clinical trial development and laboratory research investigating new agents to improve outcomes in patients with GI cancers. He is board certified by the American Board of Internal Medicine in Internal Medicine and board eligible for Medical Oncology.



Rachna Shroff, MD, MS

Rachna T. Shroff, MD, MS is an Associate Professor in the Department of Medicine, Division of Hematology and Oncology, and Chief of the Section of GI Medical Oncology at the UA Cancer Center. She also is the Director of the Clinical Trials Office for the entire Cancer Center and she serves as the leader of the Gastrointestinal Oncology Disease Oriented Team, which oversees the GI cancer research program at the university. Dr. Shroff completed her fellowship in medical oncology at the University of Texas MD Anderson Cancer Center and then joined the faculty there. She has been the principal investigator on a number of trials in pancreatic and hepatobiliary cancers and has established herself a leading expert in biliary cancer and has authored many peer-reviewed publications in these areas. Nationally, Dr. Shroff is a member of ASCO, serves as the ASCO liaison on the GI ASCO Program Committee. She participates in the SWOG GI Committee, and the NCI Hepatobiliary Taskforce through which she is a national PI on pivotal, randomized phase 3 study, SWOG 1815.

TITLE SPONSOR



Cancer Center

COLLEGE OF MEDICINE TUCSON

Gastroenterology
& Hepatology



Special thanks to the **Chapa Foundation**
for their donation to the Spotlight on
Stomach Cancer Symposium